

LEGEND

	BENCHMARK
	TRAVERSE POINT
	SOIL BORING
	SEWER MH (STORM/SAN)
	SQUARE CATCH BASIN
	ROUND CATCH BASIN
	BEEHIVE CATCH BASIN
	CLEAN OUT
	STEAM MANHOLE
	UNKNOWN MANHOLE
	HYDRANT
	GATE VALVE AND WELL
	WATER VALVE
	WATER SHUT OFF
	VALVE BOX
	WATER METER
	DETROIT EDISON MANHOLE
	ELECTRIC PEDESTAL
	ELECTRIC HANDHOLE
	PUB. LIGHTING DEPT.
	TELEPHONE MANHOLE
	GAS VALVE
	UTILITY POLE
	GUY ANCHOR
	LIGHT POLE
	PARKING METER
	SIGN
	RR CONTROL BOX
	RR CROSSING
	DECIDUOUS TREE
	CONIFEROUS TREE
	CHAINLINK FENCE
	WALL (STONE OR BLOCK)
	OVERHEAD UTILITIES
	EX. STORM LINES
	EX. SANITARY LINES
	EX. COMBINATION LINES
	EX. STEAM LINES
	EX. WATERMAIN
	EX. GAS
	EX. ELEC. LINES
	EX. PUB. LIGHTING DEPT.
	EX. TELEPHONE
	EX. CABLE LINES

OVERHEAD UTILITY NOTE
NO OVERHEAD UTILITY LINES ARE PRESENT IN THE SPECIFIED PROJECT AREA.

SITE FACILITIES

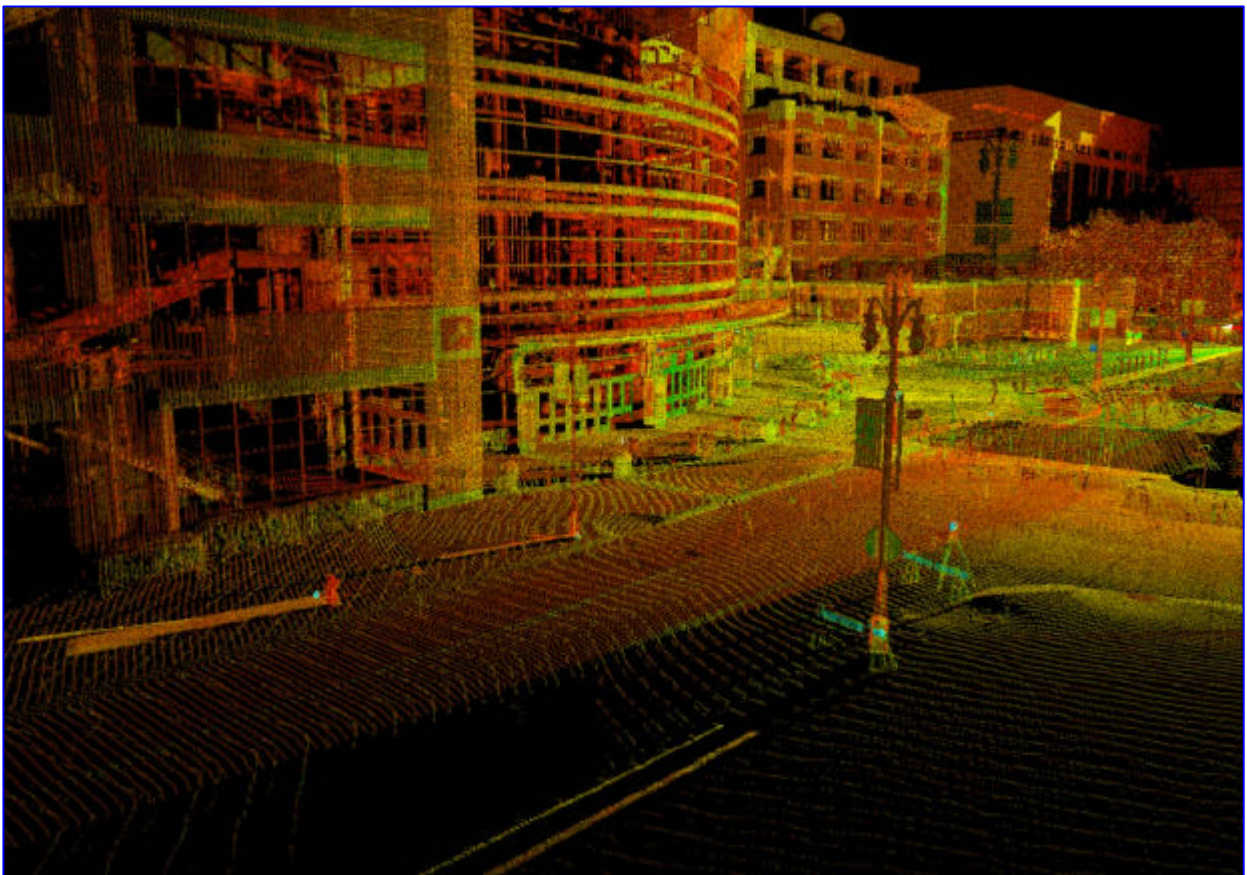
UTILITY COMPANY	SENT	RECEIVED	PLAN NO.	PLAN DATE	UTILITY INFORMATION AS SHOWN INDICATES APPROXIMATE LOCATIONS AND TYPES OF FACILITIES ONLY AS DISCLOSED TO THIS FIRM BY THE VARIOUS UTILITY COMPANY'S RECORDS. NO GUARANTEE IS GIVEN OR IMPLIED AS TO THE COMPLETENESS OR ACCURACY THEREOF. PRIOR TO CONSTRUCTION, ALL LOCATION AND DEPTHS OF EXISTING OVERHEAD AND UNDERGROUND UTILITIES IN CONFLICT WITH THE CONSTRUCTION OF PROPOSED IMPROVEMENTS SHALL BE VERIFIED IN THE FIELD DURING CONSTRUCTION. CONTRACTOR SHALL USE EXTREME CAUTION WHEN OPERATING NEAR OVERHEAD AND/OR BURIED UTILITIES.
MICHIGAN CONSOLIDATED GAS CO.	08/17	N/A	---	---	
DETROIT WATER AND SEWER DEPARTMENT	08/17	08/24	20-2-4	12/7/98	
DETROIT EDISON	08/17	N/A	5-28-42	1/21/99	
SBC	08/17	N/A	---	---	
PUBLIC LIGHTING DEPARTMENT	08/17	N/A	---	---	
COMCAST CABLE COMMUNICATIONS	08/17	N/A	---	---	

N/A = HAVE NOT RECEIVED UTILITIES TO DATE CALL MISS DIG. 1-800-452-7171

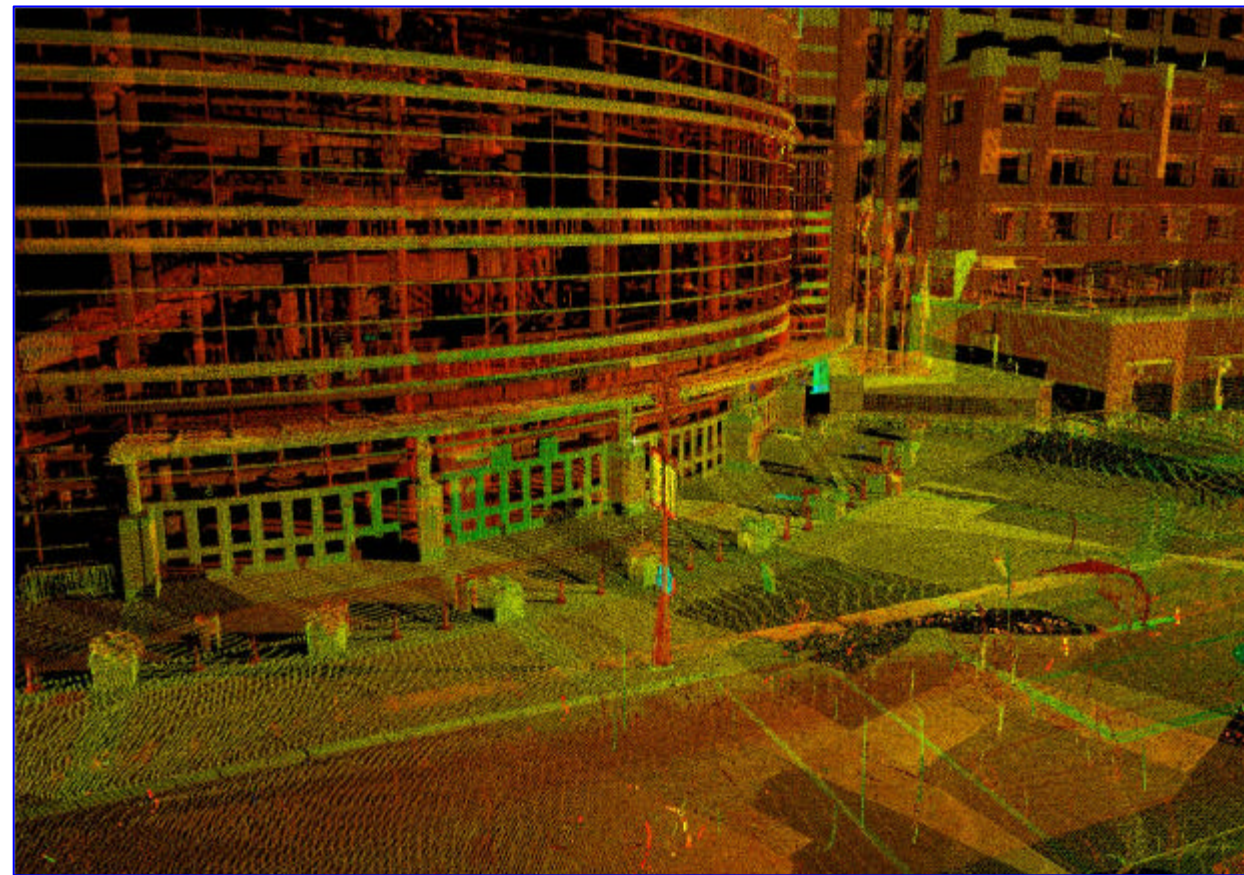
BENCHMARK LIST
CITY OF DETROIT VERTICAL CONTROL SYSTEM

	TOP CENTER NUT ON HYDRANT AT THE SOUTHWEST CORNER OF WITHERELL AND ADAMS (OFFSITE). ELEVATION = 125.847
	TOP CENTER NUT ON HYDRANT IN EAST OF WITHERELL AND CENTER OF MADISON (OFFSITE). ELEVATION = 124.904
	TOP CENTER NUT ON HYDRANT AT NORTHWEST CORNER OF JOHN R AND MADISON (OFFSITE). ELEVATION = 124.382
	TOP CENTER NUT ON HYDRANT AT SOUTHWEST CORNER OF ADAMS AND JOHN R. (OFFSITE). ELEVATION = 123.509

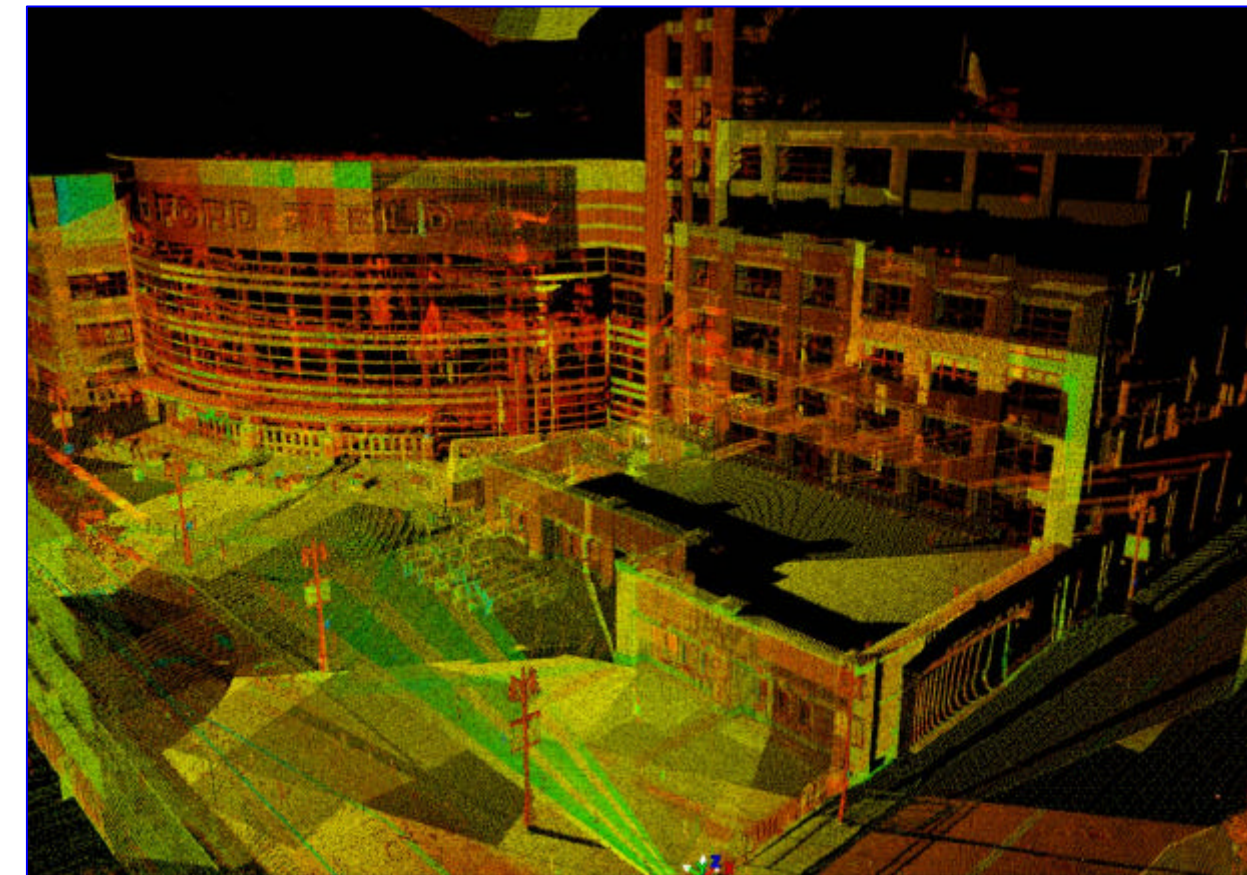
FLOOD NOTE
EXAMINATION OF THE FLOOD INSURANCE RATE MAP (COMMUNITY-PANEL NUMBER 260222 0030 B, DATED JULY 2, 1981) IN ACCORDANCE WITH THE NATIONAL FLOOD INSURANCE PROGRAM OF 1968 INDICATES SUBJECT PROPERTY LIES WITHIN ZONE "C", (AREA OF MINIMAL FLOODING).



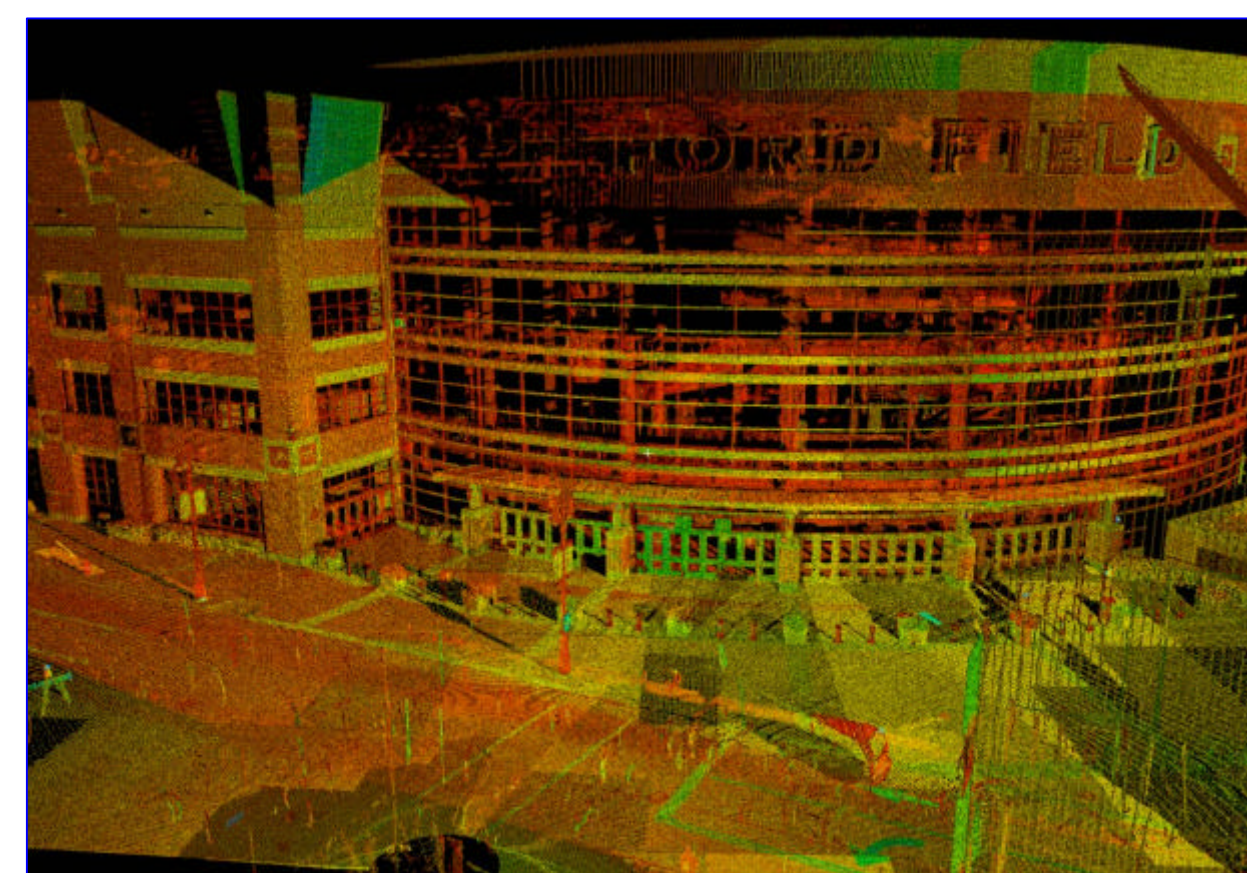
SCAN PERSPECTIVE #1



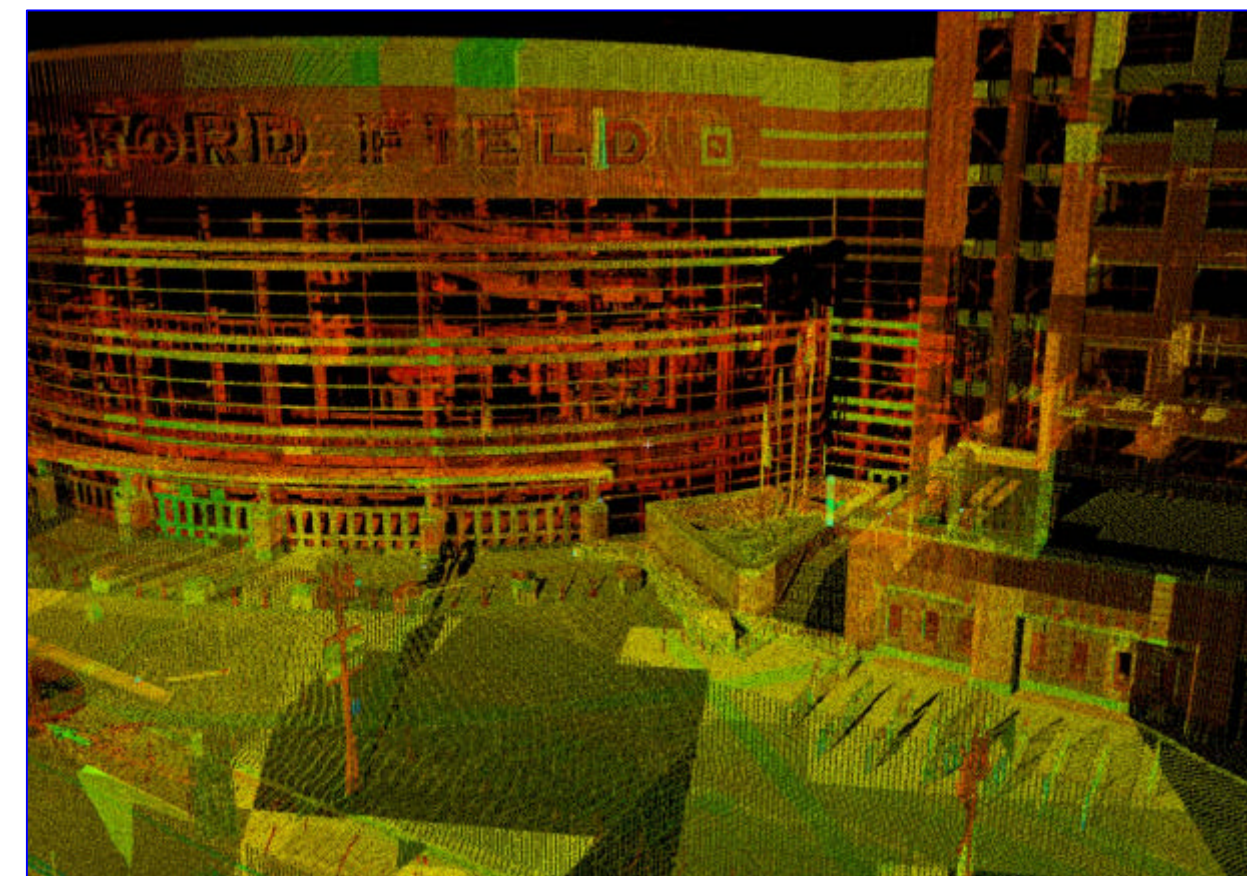
SCAN PERSPECTIVE #2



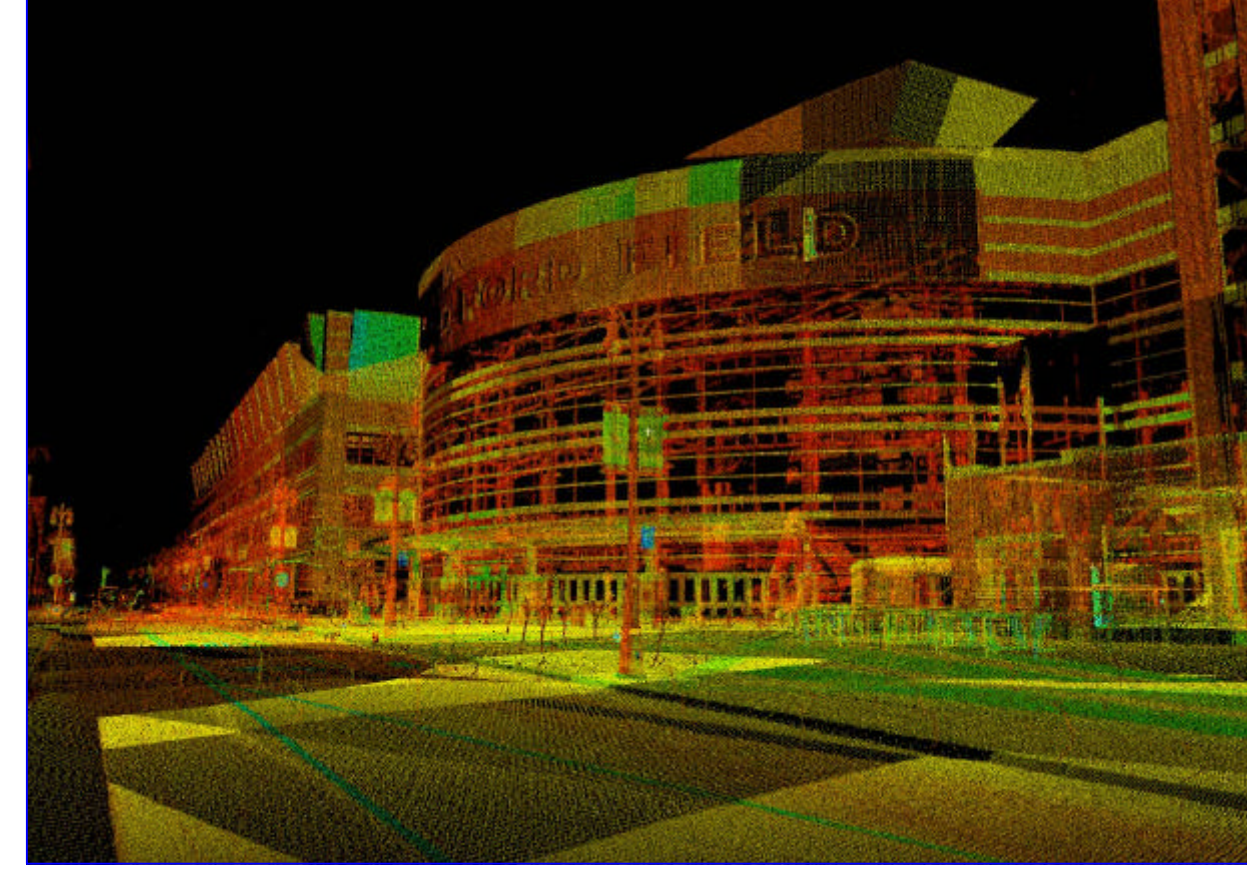
SCAN PERSPECTIVE #6



SCAN PERSPECTIVE #3



SCAN PERSPECTIVE #4



SCAN PERSPECTIVE #5

DATE 08/23/04	REVISED ADDED UTILITY INFORMATION	DATE 08/24/04	BY B.S.	DRAWN BY: JRB	CHECK BY: GM/SRJ	 12504 STEPHENS WAREEN, MI 48069 TEL - (810) 755-5770 • FAX (810) 755-5774 HTTP: www.metcoservices.com	JOB NUMBER 04-120
SCALE 1" = 20'				BOOK NO.: 439	PAGE NO.: 59		CLIENT: TURNER CONSTRUCTION
				EMBASSY SUITES AT FORD FIELD			TOPOGRAPHIC SURVEY